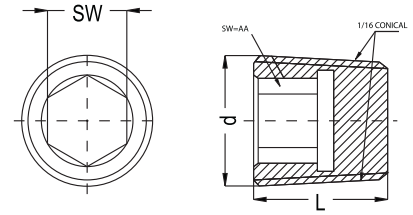


Ordering of the cylindrical plugs please add - D - at the end of the order no  
Für zylindrische Verschlußstopfen schreiben Sie bitte ein - D - dazu



**BRASS / MESSING**



**STAINLESS STEEL / EDELSTAHL**



**STEEL / STAHL**

**BSPT Pressure Plugs (1/16" Conical thread) - Verschlußstopfen mit BSPT - Gewinde (1/16" konisch)**

Material :MS58 (Brass) - Messing (DIN 906)

Order No Bestellnr.	d	L	SW
KTR 10	BSPT 1/8"	8	5
KTR 13	BSPT 1/4"	10	7
KTR 17	BSPT 3/8"	10	8
KTR 21	BSPT 1/2"	10	10
KTR 26	BSPT 3/4"	12	12
KTR 33	BSPT 1"	19	17
KTR 42	BSPT 1 1/4"	22	22
KTR 48	BSPT 1 1/2"	22	24

Material :Steel - Stahl (DIN 906)

Order No Bestellnr.	d	L	SW
KTR 10.C	BSPT 1/8"	8	5
KTR 13.C	BSPT 1/4"	10	6
KTR 17.C	BSPT 3/8"	11	8
KTR 21.C	BSPT 1/2"	13	10
KTR 26.C	BSPT 3/4"	17	12
KTR 33.C	BSPT 1"	19	17
KTR 42.C	BSPT 1 1/4"	22	22
KTR 48.C	BSPT 1 1/2"	22	24

Material :Stainless steel (AISI 316L)-Edelstahl (DIN 906)

Order No Bestellnr.	d	L	SW
KTR 10.S	BSPT 1/8"	8	5
KTR 13.S	BSPT 1/4"	10	6
KTR 17.S	BSPT 3/8"	11	8
KTR 21.S	BSPT 1/2"	13	10
KTR 26.S	BSPT 3/4"	17	12
KTR 33.S	BSPT 1"	19	17
KTR 42.S	BSPT 1 1/4"	22	22
KTR 48.S	BSPT 1 1/2"	22	24

**NPT Pressure Plugs (1/16" Conical thread) - Verschlußstopfen mit NPT - Gewinde (1/16" konisch)**

Material :MS58 (Brass) - Messing (DIN 906)

Order No Bestellnr.	d	L	SW
KTN 10	NPT 1/8"	8	5
KTN 13	NPT 1/4"	10	6
KTN 17	NPT 3/8"	11	8
KTN 21	NPT 1/2"	13	10
KTN 26	NPT 3/4"	17	12
KTN 33	NPT 1"	19	17
KTN 42	NPT 1 1/4"	22	22
KTN 48	NPT 1 1/2"	22	24

Material :Steel - Stahl (DIN 906)

Order No Bestellnr.	d	L	SW
KTN 10.C	NPT 1/8"	8	5
KTN 13.C	NPT 1/4"	10	6
KTN 17.C	NPT 3/8"	11	8
KTN 21.C	NPT 1/2"	13	10
KTN 26.C	NPT 3/4"	17	12
KTN 33.C	NPT 1"	19	17
KTN 42.C	NPT 1 1/4"	22	22
KTN 48.C	NPT 1 1/2"	22	24

Material :Stainless steel (AISI 316L)-Edelstahl (DIN 906)

Order No Bestellnr.	d	L	SW
KTN 10.S	NPT 1/8"	8	5
KTN 13.S	NPT 1/4"	10	6
KTN 17.S	NPT 3/8"	11	8
KTN 21.S	NPT 1/2"	13	10
KTN 26.S	NPT 3/4"	17	12
KTN 33.S	NPT 1"	19	17
KTN 42.S	NPT 1 1/4"	22	22
KTN 48.S	NPT 1 1/2"	22	24

**Metric Pressure Plugs (1/16" Conical thread) - Verschlußstopfen mit Gewinde (1/16" metrisch)**

Material :MS58 (Brass) - Messing (DIN 906)

Order No Bestellnr.	d	L	SW
KTM 8	M8x0,75	8	4
KTM 10	M10x1	8	5
KTM 12	M12x1.5	10	6
KTM 14	M14x1.5	10	7
KTM 16	M16x1.5	10	8
KTM 24	M24x1.5	10	12

Material :Steel - Stahl (DIN 906)

Order No Bestellnr.	d	L	SW
KTM 8.C	M8x0,75	8	4
KTM 10.C	M10x1	8	5
KTM 12.C	M12x1.5	10	6
KTM 14.C	M14x1.5	10	7
KTM 16.C	M16x1.5	10	8
KTM 24.C	M24x1.5	10	12

Material :Stainless steel (AISI 316L)-Edelstahl (DIN 906)

Order No Bestellnr.	d	L	SW
KTM 8.S	M8x0,75	8	4
KTM 10.S	M10x1	8	5
KTM 12.S	M12x1.5	10	6
KTM 14.S	M14x1.5	10	7
KTM 16.S	M16x1.5	10	8
KTM 24.S	M24x1.5	10	12